



#### **HYPONTECH CHINA (HEADQUATER)**

No.1508 Xiangjiang Road, SUZHOU, CHINA 215000

Enquiry Email: [info@hypontech.com](mailto:info@hypontech.com)

Service Email: [service@hypontech.com](mailto:service@hypontech.com)

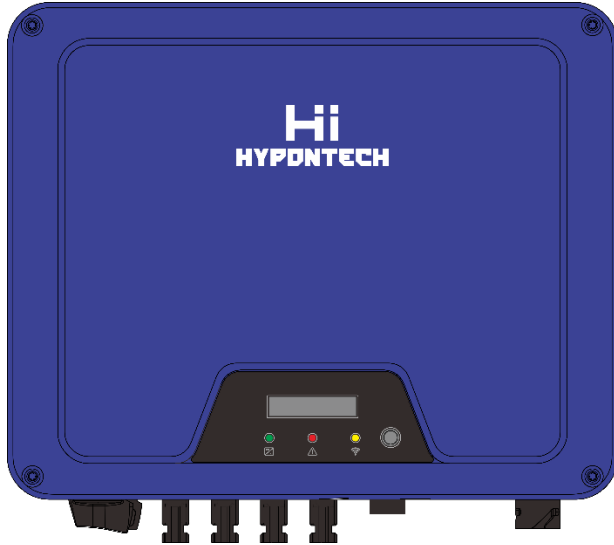
Contact: +86 512 8071 2199

#### **HYPONTECH AUSTRALIA**

Unit 604/7 Jenkins Rd, CARLINGFORD, NSW 2118

Service Email: [service.au@hypontech.com](mailto:service.au@hypontech.com)

Service Line: +61 028 054 0377



**HPT-15K/17K/20K/25K Series**  
**3-Phase Grid-tied Solar Inverters**













**USER MANUAL**

# CATALOGUE

|  |           |
|--|-----------|
| <b>1. SYMBOLS ON THE LABEL</b> .....                                     | <b>5</b>  |
| <b>2. SAFETY AND WARNINGS</b> .....                                      | <b>5</b>  |
| <b>3. UNPACKING</b> .....  | <b>6</b>  |
| 3.1 Scope of Delivery.....   | 6         |
| 3.2 Product Overview.....  | 6         |
| <b>4. INSTALLING</b> .....   | <b>8</b>  |
| 4.1 Installation Requirement.....  | 8         |
| 4.2 Mounting Location.....   | 9         |
| 4.3 Mounting.....  | 10        |
| 4.4 Installing the PE cable.....   | 10        |
| <b>5. COMMISSIONING</b> .....  | <b>11</b> |
| 5.1 Safety Instructions.....   | 11        |
| 5.2 AC Wire Assembly and Connection.....                                 | 12        |
| 5.3 DC Wire Assembly and Connection.....                                 | 13        |
| 5.4 Residual Current Protection.....                                     | 13        |
| <b>6. COMMUNICATION</b> .....  | <b>14</b> |
| 6.1 System monitoring via Datalogger - RS485/Wi-Fi /GPRS (Optional)..... | 14        |
| 6.2 Output Power Control via Smart Meter.....                            | 15        |
| 6.3 Demand Responsive Modes (DRMs).....                                  | 15        |
| <b>7. START UP AND OPERATION</b> .....                                   | <b>16</b> |
| 7.1 Safety Check Before Start Up.....                                    | 16        |
| 7.2 Inverter LED Indicators.....   | 17        |
| 7.3 Display and Control Logics.....                                      | 18        |
| <b>8. DISCONNECTING FROM VOLTAGE RESOURCES</b> .....                     | <b>19</b> |
| <b>9. TECHNICAL PARAMETERS</b> .....                                     | <b>20</b> |
| <b>10. TROUBLE SHOOTING</b> .....  | <b>23</b> |
| <b>11. SYSTEM MAINTENANCE</b> .....                                      | <b>28</b> |
| <b>12. RESTARTS</b> .....  | <b>29</b> |
| <b>13. CERTIFICATES</b> .....  | <b>29</b> |



## 1. SYMBOLS ON THE LABEL

|   |  |   |  |
|---|--|---|--|
|  | DANGER, WARNING AND CAUTION                        |  | RECYCLABLE AND REUSABLE                |
|  | HIGH VOLTAGE<br>AVOID CONTACT                      |  | AVOID DAMP AND MOISTURE                |
|  | HIGH TEMPERATURE<br>AVOID CONTACT                  |  | SHIPMENT STACK LIMIT: 7                |
|  | CE MARKS   |  | DO NOT DISPOSE WITH<br>HOUSEHOLD WASTE |
|  | PROCEED OPERATIONS<br>AFTER 5 MINUTES<br>DISCHARGE |  | BREAKABLE ITEM                         |
|  | PLACE UPWARDS                                      |  | USER MANUAL IN PACK                    |

## 2. SAFETY AND WARNINGS

1. All persons who are responsible for mounting, installation, commissioning, maintenance, tests, and service of HYPONTECH inverter products must be suitably trained and qualified for corresponding operations. They MUST be experienced and have knowledge of operation safety and professional methods. All installation personnel must have knowledge of all applicable safety information, standards, directives, and regulations.
2. The product must ONLY be connected and operated with PV arrays of protection class II, in accordance with IEC 61730, application class A. The PV modules must also

be compatible with this product. Power resources other than compatible PV arrays MUST not be connected and operate with the product.









3. When designing or constructing a PV system, all components MUST remain in their permitted operating ranges, and their installation requirements MUST always be fulfilled.
4. Under exposure to sunlight, the PV array may generate dangerous output in DC voltage. Contacts with the DC wires, conductors and live components in the inverter may result in lethal shocks.
5. High voltages in inverter could cause lethal electrical shocks. Before proceeding any work, including maintenance and/or service, on the inverter, fully disconnect it from all DC input, AC grid and other voltage sources. There MUST be a 5-minute waiting time after the full disconnection.
6. The DC input voltage of the PV array MUST never exceed the maximum input voltage of the inverter.
7. DO NOT touch parts of the inverter during operation as heat will be induced and these parts will exceed 60°C.

### 3. UNPACKING

---

#### 3.1 Scope of Delivery

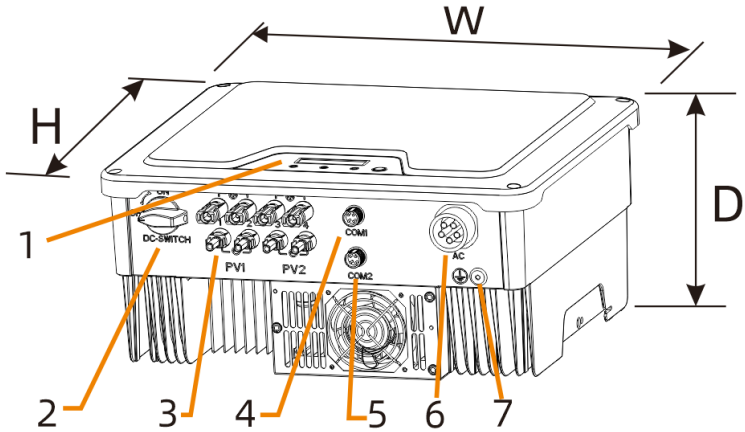
Please inspect and check for completeness in the scope of delivery. Confirm with purchase order.

|  |   |   |   |   |   |   |  |
|--|---|---|---|---|---|---|--|
|  |  |  |  |  |  |  |  |
| INVERTER   | MOUNTING BRACKET  | MOUNTING ACCESSORIES  | DC PLUGS (sealed)   | AC CONNECTOR  | COM DATALOGGER (OPTIONAL)   | METER / DRED CONNECTOR  | DOCUMENTS  |
| 1  | 1   | 1   | 24  | 1   | 1   |   | 1  |

#### 3.2 Product Overview

The total size of HPT-15K/17K/20K/25K is 425(width) × 351(height) × 200(depth) mm. It has 4 pairs of PV input terminals and 2 communication ports. It also has a LED&LCD (or just LED, determined by user) for getting information and setting parameters at field.

The detail description is shown below:



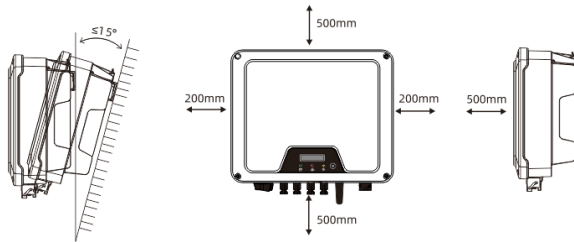
| Mark Num. | Component              | Description                              |
|-----------|------------------------|--|
| 1         | LED&LCD or LED         | Display and setting device at field      |
| 2         | DC Switch              | For switch on/off the inverter           |
| 3         | PV Terminal (s)        | Connected with PV Panel                  |
| 4         | COM1: Wi-Fi/GPRS/RS485 | Alternative distant communication method |
| 5         | COM2: METER/DRED       | For smart-meter or DRED                  |
| 6         | Secondary PE Terminal  | For Grounding Protection                 |
| 7         | AC Terminal            | Connected with AC Grid                   |

## 4. INSTALLING

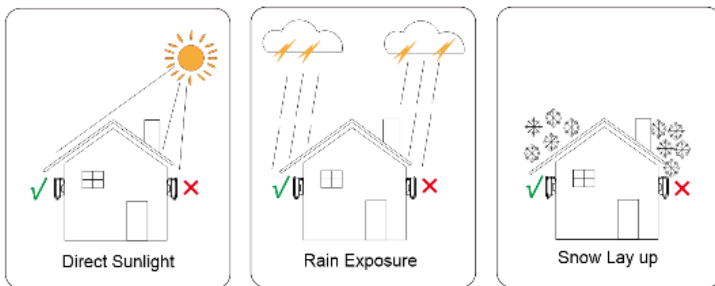
---

### 4.1 Installation Requirement

1. Please install the inverter(s) in places that can avoid inadvertent contact.
2. Installation method, location and surface must be fitting for the inverter's weight and dimensions.
3. Please install the inverter in an accessible location for operation, future maintenance and service.
4. The inverter performance peaks at ambient temperature lower than 45°C.
5. When installing in residential or domestic environment, it is recommended to install and mount the inverter on a solid, concrete wall surface. Mounting the inverter on composite or plaster boards or walls with similar materials would induce noise during its operation and is therefore not recommended.
6. DO NOT cover the inverter NOR place any objects on top of the inverter.
7. To ensure sufficient room for heat dissipation and maintenance, the clearing space between inverter(s) and other surroundings is indicated below for reference:



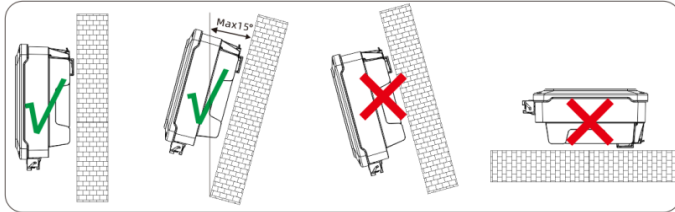
8. Avoid direct exposure to sunlight and rain and snow layup.





## 4.2 Mounting Location

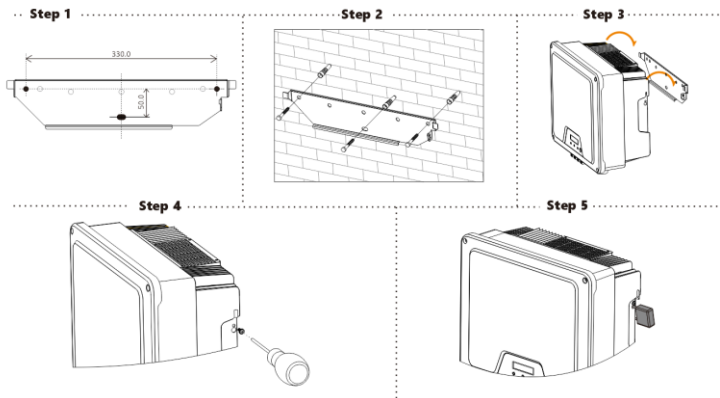
1. DO NOT mount the inverter near any inflammable materials.
2. DO NOT mount the inverter near any explosive materials.



3. DO NOT mount the inverter on tilting surface over  $15^\circ$  backwards. Please mount the inverter on a vertical wall surface.
4. DO NOT mount the inverter on any surfaces tilting forward or to either sides.
5. DO NOT mount the inverter on a horizontal surface.
6. For easy installation and operation, please mount the inverter on a height that the display could match eye level.
7. The bottom side where all commissioning terminals are equipped MUST always point downwards.

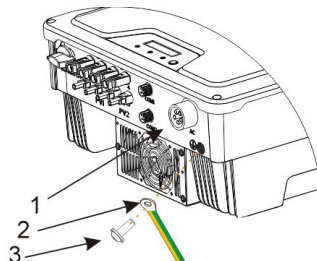
### 4.3 Mounting

1. Use the mounting bracket as a template and drill holes of 10mm diameter and 70mm depth.
2. Fix the mounting bracket with the screws and expansion bolts packed in mounting accessories.
3. Hold up the inverter and tilt it slightly forward. Hang up the inverter and attach it to the mounting bracket. Check both sides of the heat sink to ensure its stably attached.
4. Use M5 screws (T25 screwdriver, torque 2.5 Nm) to attach the heat sink fins to the mounting bracket.
5. It is recommended to attach the anti-theft lock to the inverter. Lock diameter  $\phi 4-5.5\text{mm}$  recommended.



### 4.4 Installing the PE cable

1. Insert the grounding conductor into the suitable terminal lug and crimp the contact.
2. Align the terminal lug with the grounding conductor and the ground washer on the screw. The teeth of the ground washer must be facing the housing.
3. Tighten it firmly into the housing (screwdriver type: T25, torque: 2.5Nm).



### Information on grounding components:

| Object | Description                               |
|--------|---|
| 1      | Housing                                   |
| 2      | M5 terminal lug with protective conductor |
| 3      | M6×12 pan head screw                      |

PE Conductor cross-section: 16 mm<sup>2</sup>

## 5. COMMISSIONING

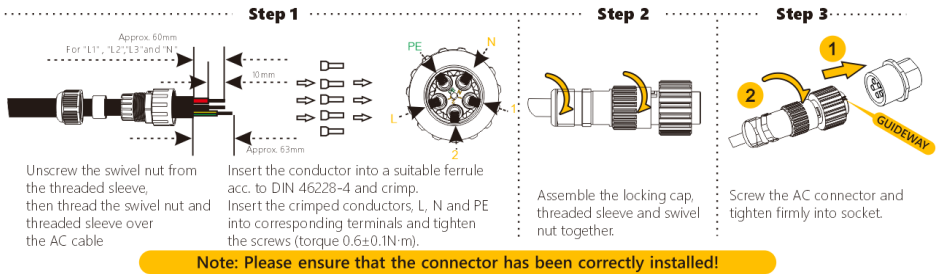
---

### 5.1 Safety Instructions

1. Measure the frequency and voltage of grid connection and make sure they follow the inverter's grid connection specifications.
2. An external circuit-breaker on the AC side (or a fuse) at 1.25\*AC rated current is strongly recommended.
3. Reliability of all earth connections must be tested and valid.
4. Before commissioning, disconnect the inverter and the circuit-breaker or fuse, and prevent accidental reconnection.

## 5.2 AC Wire Assembly and Connection

### 5.2.1 AC Commissioning



### 5.2.2 AC Switch Types

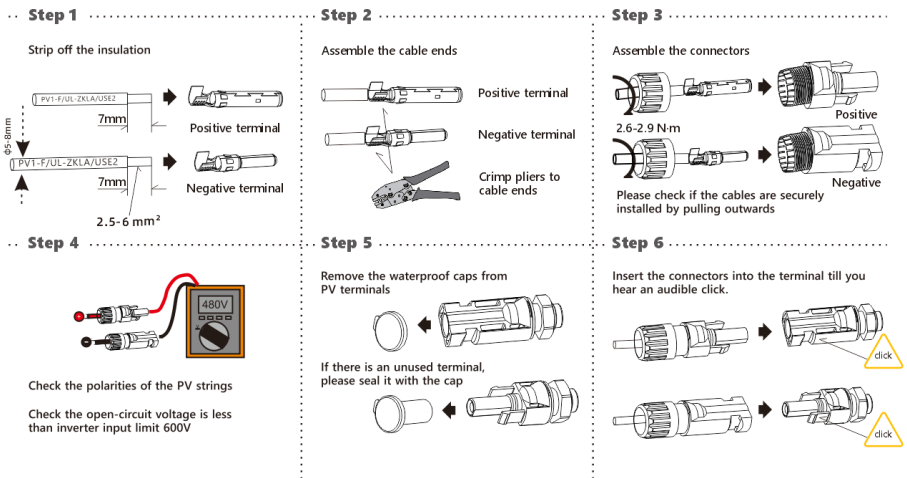
Please install an individual 2-stage miniature circuit breaker according to the following specifications.

| Model   | Maximum output current (A) | AC Breaker Rated current (A) |
|---------|----------------------------|------------------------------|
| HPT-15K | 24                         | 32                           |
| HPT-17K | 27.6                       | 32                           |
| HPT-20K | 31.9                       | 40                           |
| HPT-25K | 36.3                       | 50                           |

### 5.3 DC Wire Assembly and Connection

1. PV modules of the connected strings must be of: the same time, identical alignment and tilting angle.
2. Before commissioning and connecting the PV arrays, the DC switch MUST be open.
3. Parallel strings must have the same number of modules.
4. It is mandatory to use the DC connectors within package for the connection of PV arrays.
5. The polarity of the PV arrays MUST be compatible to the DC connectors of the inverter.
6. The DC input voltage AND DC input current of the PV array MUST never exceed the maximum input allowance of the inverter.

#### DC Commissioning:



### 5.4 Residual Current Protection

This product is equipped with residual current protection device internally, in accordance with IEC 60364-7-714. An external residual current protection device is not needed.

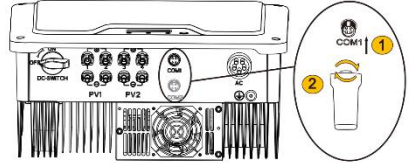
If the local regulation demands otherwise, it is recommended to install a 30mA Type B residual current protection device.

## 6. COMMUNICATION

### 6.1 System monitoring via Datalogger - RS485/Wi-Fi /GPRS (Optional)

#### 6.1.1 Wi-Fi /GPRS Datalogger Installation

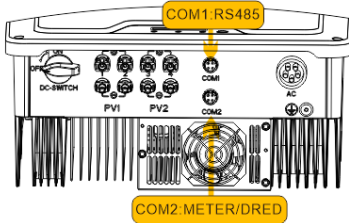
1. Unpack the Datalogger from package.
2. Unscrew the cap in COM1 port and plug the Datalogger in and tighten.
3. For user guidance and configuration of Datalogger, please refer to the



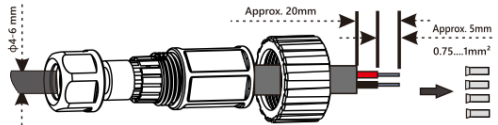
corresponding HYPONTECH Wi-Fi Stick Guide manual, which is available in printed form inside Documents pack, or an online manual on HYPONTECH website at <https://www.hypontech.com/xiazai>.

#### 6.1.2 RS485/Smart Meter/DRED Connection

##### Position



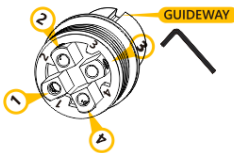
##### Step 1



Insert the wires into suitable ferrules (DIN 46228) and crimp.

##### Step 2

Insert the crimped conductors accordingly into their corresponding terminals and tighten the screws use the screwdriver in the attached bag.



##### ▶ RS485 FOR COM1

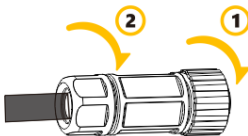
Power + ▶ PIN 1  
Power - ▶ PIN2  
RS485 A ▶ PIN3  
RS485 B ▶ PIN4

##### ▶ METER OR DRED FOR COM2

RS485 B ▶ PIN1  
RS485 A ▶ PIN2  
COM LOAD/0 ▶ PIN3  
REF GEN/0 ▶ PIN4

##### Step 3

Assemble the locking cap, threaded sleeve and swivel nut together.



##### Step 4

Screw the connector into the socket and tighten firmly.





When installing RS485, the COM sealing plate needs to be removed. All operation MUST NOT proceed until AC and DC power is securely disconnected and discharged to prevent electric shocks.

## 6.2 Output Power Control via Smart Meter

The inverter's active power output and efficiency could be monitored via the application of a smart meter.



Please refer to **EASTRON SDM630-Modbus V2 User manual** for its connection and baud rate settings.

## 6.3 Demand Responsive Modes (DRMs)



### DRMs Application Description

- Only applicable to AS/NZS4777.2:2015.
- Only DRM0 is available.

Users can close the S9 on DREDBOX to activate DRED function and Operate the Disconnection Device by close S0. Other function of DRED is all disabled.

The inverter shall detect and initiate a response to all supported demand response commands.

### Moistures and Dust will damage the inverter

- Secure and tighten the screws on COM sealing plate.
- Warranty will be void if the inverter is damaged due to moisture and dust caused by poor installation of COM sealing plate.

## 7. START UP AND OPERATION

---

### 7.1 Safety Check Before Start Up

Please check before switching on any voltage resources connected to the inverter and closing inverter's DC switch:




1. Grid Voltage: Check the grid voltage at point of connection at the inverter complies with permitted range of the inverter.
2. Mounting Bracket: Check if the mounting bracket is properly and securely installed.
3. Mounting of the inverter: Check if the inverter is properly mounted and attached to the mounting bracket.
4. DC Connectors: Check if the DC connectors are installed correctly on terminals.
5. AC Connectors and Wire Assembly: Check if wires are assembled correctly on the AC side and if the AC connector is properly and securely installed. Check if the AC connector is firmly plugged into AC terminal.
6. Cables: Check if all cables are reliably connected. Check if the connections are effective, while the insulations are undamaged.
7. Groundings: Check all groundings using multimeter and if all exposed metal parts of the inverter are properly grounded.
8. DC Voltage: Check if the largest open-circuit voltage of PV arrays complies with the permitted range.
9. DC Polarity: Check if the wires from DC voltage resource are connected to terminals with correct polarity.
10. Grounding Resistance: Check if the grounding resistance of PV strings  $>1\text{M}\Omega$  using a multimeter.

After all installation and checks, close the AC circuit-breaker, then the DC switch. The inverter will start to operate when DC input voltage and grid conditions meet the requirements of inverter startup.



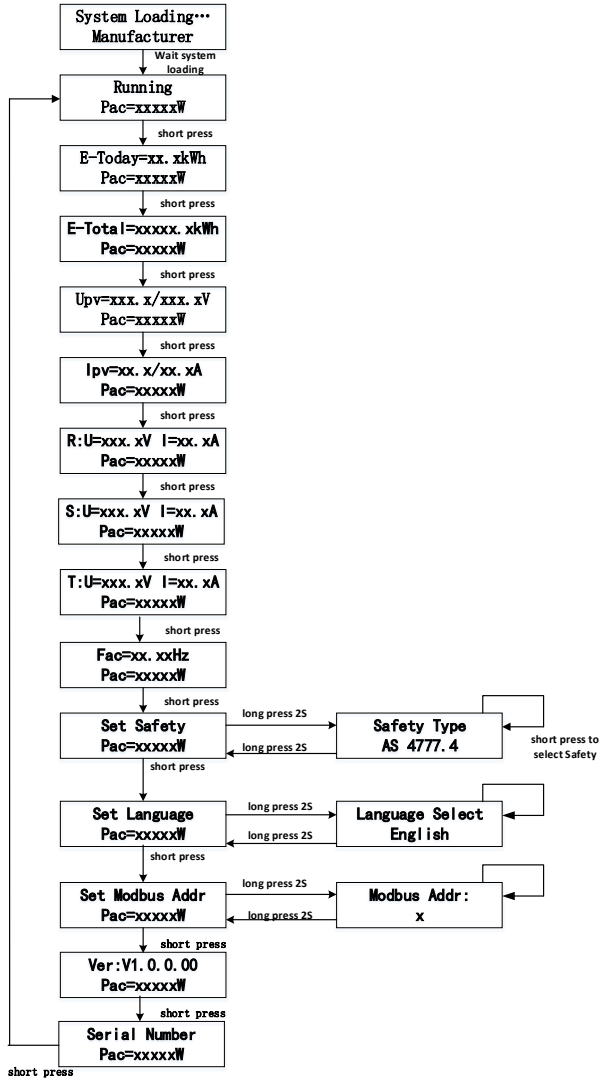
## 7.2 Inverter LED Indicators

When the inverter operates, LED symbols on display have the following meanings:

|  |   |
|--|---|
| <br>POWER | <ul style="list-style-type: none"><li><input checked="" type="radio"/> <b>ON</b><br/>Inverter Power ON and Feeding Power to Grid</li><li><input type="radio"/> <b>Blink</b><br/>Inverter Power ON. Not Feeding Power to Grid</li><li><input type="radio"/> <b>OFF</b><br/>Inverter Power OFF. DC Disconnected</li></ul> |
| <br>FAULT | <ul style="list-style-type: none"><li><input checked="" type="radio"/> <b>ON</b><br/>Inverter is Faulty</li><li><input type="radio"/> <b>OFF</b><br/>No Fault</li></ul>   |
| <br>COM   | <ul style="list-style-type: none"><li><input type="radio"/> <b>Blink</b><br/>Communication Device Connected</li><li><input type="radio"/> <b>OFF</b><br/>Communication Device Disconnected</li></ul>  |

### 7.3 Display and Control Logics

When inverter starts up and operates, there is a control button beside LCD Display of the inverter. Please follow the logics listed below.



## 8. DISCONNECTING FROM VOLTAGE RESOURCES

---

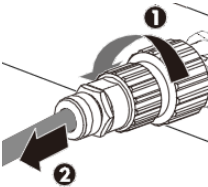
Before proceeding any operations on inverter, please disconnect the inverter from all voltage resources as described in this manual.

Following these steps in described sequence are mandatory.

1. Disconnect miniature circuit-breaker and prevent from unintentional reconnections.
2. Open the DC switch and prevent the switch from closing unintentionally.
3. Use clamps to ensure there is no electrical current in DC wires.
4. Disconnect all DC connections and resources. Unplug the DC connectors, and DO NOT pull the cables.



5. Use multimeter to ensure the voltage on DC terminals of inverter is 0.
6. Unscrew and remove the AC connector.



### **Danger to life due to high voltages.**

Inverter capacitors need 10 minutes to be completely de-energized.

When an error occurs, DO NOT remove the cover of the inverter onsite. Improper operations and attempts may induce electric shock.

## 9. TECHNICAL PARAMETERS

| Module  | HPT-15K           | HPT-17K           | HPT-20K           | HPT-25K           |
|---|-------------------|-------------------|-------------------|-------------------|
| <b>INPUT/DC</b>                                 |                   |                   |                   |                   |
| Max. PV Power (Wp)                              | 22500             | 25500             | 30000             | 30000             |
| Max. Input Voltage (V)                          | 1000              |                   |                   |                   |
| MPP Voltage Range (V)                           | 200~900           |                   |                   |                   |
| Min. DC Voltage (V)                             | 150               |                   |                   |                   |
| Nominal DC-Input Voltage (V)                    | 620               |                   |                   |                   |
| Max. Input Current (A)                          | 13 per string     |                   |                   |                   |
| Max. short DC current (A)                       | 20 per string     |                   |                   |                   |
| No. of independent MPPT inputs                  | 2                 |                   |                   |                   |
| No. of PV strings per MPPT                      | 2                 |                   |                   |                   |
| Max. inverter backfeed current to the array (A) | 0                 |                   |                   |                   |
| <b>OUTPUT/AC</b>                                |                   |                   |                   |                   |
| Rated Power (W)                                 | 15000             | 17000             | 20000             | 25000             |
| Max. apparent AC power (VA)                     | 16500             | 19000             | 22000             | 25000             |
| Rated grid voltage (Vac)                        | 380/400           |                   |                   |                   |
| Rated power frequency (HZ)                      | 50/60             |                   |                   |                   |
| Max. output current (A)                         | 24                | 27.6              | 31.9              | 36.3              |
| Max. output overcurrent protection(A)           | 40                | 40                | 40                | 50                |
| Inrush current (Peak and duration)*             | 18.4A<br>@0.214ms | 18.4A<br>@0.214ms | 18.4A<br>@0.214ms | 18.4A<br>@0.214ms |
| Max. output fault current( Peak and duration)*  | 35.5A<br>@420us   | 35.5A<br>@420us   | 35.5A<br>@420us   | 35.5A<br>@420us   |
| Adjustable displacement power factor            | 0.8ind to 0.8cap  |                   |                   |                   |
| THDi at rated power                             | <3%               |                   |                   |                   |
| <b>EFFICIENCY</b>                               |                   |                   |                   |                   |

|                                     |                           |       |       |       |
|-------------------------------------|---------------------------|-------|-------|-------|
| Max. Efficiency                     | 98.6%                     | 98.6% | 98.6% | 98.6% |
| Euro Efficiency                     | 98.2%                     | 98.2% | 98.2% | 98.2% |
| MPPT Efficiency                     | 99.9%                     |       |       |       |
| <b>PROTECTION</b>                   |                           |       |       |       |
| Anti-islanding Protection           | Integrated                |       |       |       |
| Input Reverse Polarity Protection   | Integrated                |       |       |       |
| Insulation Resistor Detection       | Integrated                |       |       |       |
| Residual Current Monitoring Unit    | Integrated                |       |       |       |
| Output Over Current Protection      | Integrated                |       |       |       |
| Output Short Protection             | Integrated                |       |       |       |
| Output Over Voltage Protection      | Integrated                |       |       |       |
| <b>GENERAL DATA</b>                 |                           |       |       |       |
| Dimensions(W*H*D) mm                | 425*351*200               |       |       |       |
| Weight (kg)                         | 20                        |       |       |       |
| Noise emission(typical) dB(A)       | <45                       |       |       |       |
| User Interface                      | LED&LCD or LED            |       |       |       |
| DC connection type                  | D4 (MC4, H4 optional)     |       |       |       |
| AC connection type                  | Plug-in Connector         |       |       |       |
| Communication                       | RS485/WiFi/GPRS(optional) |       |       |       |
| Cooling method                      | Smart Fan Cooling         |       |       |       |
| Operating ambient temperature range | -25°C....+60°C            |       |       |       |
| Allowable relative humidity range   | 0%~100%                   |       |       |       |
| Max. operating altitude(m)          | 3000(>2000 derating)      |       |       |       |
| Degree of protection(IEC 60529)     | IP65                      |       |       |       |
| Climatic category (IEC 60721-3-4)   | 4K4H                      |       |       |       |
| Isolation method                    | Transformerless           |       |       |       |
| Power loss in night mode            | <1W                       |       |       |       |

| <b>Inverter power quality response modes</b>  |   |
|---|---|
| <b>Power quality response modes</b>   | <b>Default operation per AS/NZS 4777.2:2015</b> |
| Volt-watt response mode   | Default: Enabled                                |
| Volt-var response mode  | Default: Disabled                               |
| Fixed power factor mode   | Default: Disabled                               |
| Reactive power mode   | Default: Disabled                               |
| Characteristic power factor curve for $\cos \phi$ (P)   | Default: Disabled                               |
| <p>Note</p> <p>The power quality modes can be enabled or disabled via our monitoring APP or Web. Please refer to the "Safety Parameter Setting User Manual" on our website at <a href="https://www.hypontech.com/xiazai">https://www.hypontech.com/xiazai</a>, or contact our servicer for more information.</p> <p>Please access the monitoring platform on <a href="http://www.hyponportal.com/signin">www.hyponportal.com/signin</a></p> |   |

## 10. TROUBLE SHOOTING

---

### Earth Fault Alarm

This inverter complies with IEC 62109-2 clause 13.9 for earth fault alarm monitoring.

If an **Earth Fault Alarm** occurs, the **error code 6** will be displayed on the LCD. Red LED indicator will also light up.

If an external indication of earth fault alarm is required, please connect PV System to inverter monitoring app/portal. The monitoring platform will send email notification in the event of an Earth Fault. Please refer to Sector 6.1 and HYPONTECH WI-FI STICK GUIDE on how to setup your inverter communication function.

### Full Error Code and Corrective Measures

When the PV system does not operate normally, we recommend the following solutions for quick troubleshooting. If an error occurs, the Error code will be displayed on the inverter's screen or on the Hypontech's monitoring App/Web, the red LED will light up. The corresponding corrective measures are as follows:

| Error Code | Fault Name   | Description  | Corrective Measures  |
|------------|--|--|--|
| 1          | Functional fault in Micro-Controller Unit (MCU)      | MCU abnormal self-check in start process                       | Disconnect the inverter from the utility grid and the PV array, and reconnect it after LED turns off.<br>If this fault is still being displayed, please contact service. |
| 2          | A faulty current sensor detected                     | AC current sensor detect current abnormal in the start process | Disconnect the inverter from the utility grid and the PV array, and reconnect it after LED turns off.<br>If this fault is still being displayed, please contact service. |
| 3          | Ground fault circuit interrupter (GFCI) sensor error | GFCI sensor self-check abnormal                                | Disconnect the inverter from the utility grid and the PV array, and reconnect it after LED turns off.<br>If this fault is still being displayed, please contact service. |

|   |   |   |  |
|---|---|---|--|
| 4 | A faulty grid relay detected  | The difference between INV voltage and output voltage exceeds limit.  | <ol style="list-style-type: none"> <li>1. Disconnect the inverter from the utility grid and the PV array, and reconnect it after LED turns off.</li> <li>2. If the fault persists, measure the phase to phase voltage and phase to zero and zero to ground voltage with a multimeter to ensure that the voltage is normal and the zero to ground voltage value should not be greater than 10V.</li> <li>3. Disconnect the inverter from the utility grid and the PV array, and reconnect it after LED turns off.</li> </ol> <p>If this fault is still being displayed, please contact service.</p> |
| 5 | PV voltage too high   | When the PV voltage of any circuit is greater than 1020V, it is determined as the PV voltage is too high.   | Check the open-circuit voltages of the strings and make sure it is below the maximum DC input voltage of the inverter. If the input voltage lies within the permissible range while the fault occurs, please contact the service.  |
| 6 | Surface insulation resistance error                                   | In the process of power on and start-up, the insulation impedance of PV + and PV - to ground is detected. When the detection insulation impedance is less than 200kohm, it is judged as insulation fault. | <ol style="list-style-type: none"> <li>1. If it happens occasionally, it may be caused by rainy or humid environment. After the fault is eliminated, the inverter can resume normal operation without other actions.</li> <li>2. If there is continuous alarm, please check the PV array's insulation to ground and make sure that the insulation resistance to ground is greater than 200KΩ. Otherwise, visual inspection of all PV cables and modules. Make sure the grounding connection of the inverter is reliable.</li> </ol> <p>If all above are normal, please contact the service.</p>    |
| 7 | Ground fault circuit interrupter (GFCI) exceeds the permissible range | residual current over the permission range  | <ol style="list-style-type: none"> <li>1. Make sure the grounding connection of the inverter is reliable.</li> <li>2. Make a visual inspection of all PV cables and modules.</li> </ol> <p>If this fault is still shown, contact the service.</p>  |
| 8 | Inverter temperature too high   | Heat sink and internal environment temperature higher than 85 degree  | <p>Please confirm:</p> <ol style="list-style-type: none"> <li>1. Whether the airflow to the heat sink is obstructed.</li> <li>2. Whether the installation site is in direct sunlight and ambient temperature around the inverter is too high.</li> </ol> <p>If all above is normal, contact the service.</p>   |



|    |  |   |  |
|----|--|---|--|
| 9  | Utility grid disconnected                    | inverter detected grid voltage failed         | <p>1.If it happens occasionally, it belongs to the short-time abnormality of the power grid, the inverter will return to normal operation after detecting that the power grid is normal, and there is no need to deal with it.</p> <p>2.If it cannot be recovered for a long time, please confirm:</p> <p>①whether the AC circuit breaker is disconnected</p> <p>②whether the AC terminal or fuse is in good contact</p> <p>③whether the power supply line is normal</p> <p>If this fault is still being shown, contact the service.</p>   |
| 10 | Grid voltage exceeds the permissible range   | grid voltage exceeds the Safety regulations   | <p>1.If it happens occasionally, it belongs to the short-time abnormality of the power grid, the inverter will return to normal operation after detecting the normal power grid, and there is no need to deal with it.</p> <p>2. In case of frequent occurrence but automatic recovery, please confirm if the grid voltage is outside the permissible range due to local grid conditions, try to modify the values of the monitored operational limits after informing the electric utility company first.</p> <p>3.If it cannot be recovered for a long time, please confirm:</p> <p>①whether the AC circuit breaker is disconnected</p> <p>②whether the AC terminal is in good connection</p> <p>③whether the power supply line is normal</p> <p>④whether the AC cable wiring (such as wire length and wire diameter) complies with the user manual guidance</p> <p>⑤whether the safety regulation settings are normal</p> |
| 11 | Grid frequency exceeds the permissible range | grid frequency exceeds the Safety regulations | <p>1.If it happens occasionally, it belongs to the short-time abnormality of the power grid, the inverter will return to normal operation after detecting the normal power grid, and there is no need to deal with it.</p> <p>2. In case of frequent occurrence but automatic recovery, please confirm if the grid voltage is outside the permissible range due to</p>   |

|    |   |  |  |
|----|---|--|--|
|    |   |  | <p>local grid conditions, try to modify the values of the monitored operational limits after informing the electric utility company first.</p> <p>3.If it cannot be recovered for a long time, please confirm:</p> <p>①whether the AC circuit breaker is disconnected</p> <p>②whether the AC terminal is in good connection</p> <p>③whether the power supply line is normal</p> <p>④ whether the safety regulation settings are normal</p> |
| 12 | DC component of the electricity exceeds the permissible range | the current exceeds 1A in static state and 4A in dynamic state | Disconnect the inverter from the utility grid and the PV array, and reconnect it after LED turns off. If this fault is still being displayed, please contact the service.  |
| 13 | EEPROM Error, e.g. transition disturbance                     | Micro CPU read EEPROM failed                                   | Disconnect the inverter from the utility grid and the PV array, and reconnect it after LED turns off. If this fault is still being displayed, please contact the service.  |
| 14 | Internal communication fault                                  | Master CPU communicate with slave CPU abnormal                 | Disconnect the inverter from the utility grid and the PV array, and reconnect it after LED turns off. If this fault is still being displayed, please contact the service.  |
| 15 | Bus-voltage too high  | Bus-voltage is greater than 1000V                              | Check the open-circuit voltages of the strings and make sure it is below the maximum DC input voltage of the inverter.<br>If the input voltage lies within the permissible range while the fault occurs, please contact the service.   |
| 16 | Bus-voltage too low   | Bus-voltage is 20V lower than standard Bus-voltage             | Check the open-circuit voltages of the strings and make sure it is below the maximum DC input voltage of the inverter. If the input voltage lies within the permissible range while the fault occurs, please contact the service.  |
| 17 | DRM S9 Error  | DRM switch S9 fault  | Check the connection of DRM device. If the DRM device is connected normally while this fault occurs, please contact the service.   |

|    |  |                     |  |
|----|--|---------------------|--|
| 18 | DRM S0 Error                             | DRM switch S0 fault | Check the connection of DRM device. If the DRM device is connected normally while this fault occurs, please contact the service. |
| 19 | N and PE voltage exceeds permitted range |                     | Check if the inverter is securely grounded.  |

# 11. SYSTEM MAINTENANCE

For the inverter's long-term performance, it is suggested to maintain your inverter regularly:

**NOTICE:**

**HEAT SINK MIGHT INDUCE INJURY**

When the inverter is operating, the heat sink might exceed 60°C

- Please disconnect all electrical cables and connections. Wait for the inverter to cool down completely.
- Use compressed air cleaning or a soft brush to clean the inverter heat sink.
- ALL aggressive chemicals, cleaning solvents or strong detergents are FORBIDDEN

| Content         | Maintenance Measures   | Cycle  |
|-----------------|--|--|
| System Cleaning | <ul style="list-style-type: none"> <li>• Check if the heat sink is covered and dusted</li> <li>• Maintenance of DC Switch can be performed at night. Turn the switch to ON and OFF positions for 4~5 times.</li> <li>• Use a wet cloth to clean the display</li> </ul> | Annually OR Half a year  |
| System Status   | <ul style="list-style-type: none"> <li>• Inspect the enclosure for damage/deformation</li> <li>• Listen for abnormal noises during operation</li> <li>• Check if the parameters are normal during operation</li> </ul>   | Half a year  |
| Commissioning   | <ul style="list-style-type: none"> <li>• Check if the cables are loose</li> <li>• Check if the cable insulations are damaged, especially the parts in contact with metal surfaces</li> </ul>   | Half a year after first commissioning<br>Annually OR Half a year |
| Grounding       | <ul style="list-style-type: none"> <li>• Check if the cables are securely grounded</li> </ul>  | Half a year after first commissioning<br>Annually OR Half a year |

## 12. RESTARTS

---

When reconnecting the inverter for electrical power supply, please follow the commissioning procedures and safety instructions as described in **Section 6** when applicable (e.g. DC Wires need to be reassembled).

Please run safety checks as described in **Section 7** before closing the DC Switch and starting up again,

## 13. CERTIFICATES

---

|                                     |  |
|-------------------------------------|--|
| Grid Standards                      | EN50549-1, AS/NZS4777.2, G98, G99, NBR16149, NB/T32004, IEC61727 |
| Safety Standards                    | IEC/EN62109-1/-2, NB/T32004                                      |
| Electromagnetic Compatibility (EMC) | EN61000-6-1, EN61000-6-2, EN61000-6-3, EN61000-6-4, NB/T 32004   |



Note: Certification information could be updated. The recent information can be found in Hypontech website

<https://www.hypontech.com>.